

# Operation Instruction

## Hydraulic Stuffer TOP

### Mod. PH13 CE



Please read the  
operation instruction  
bevor using the  
machine.

**TOPERCZER GESMBH - ...ask the professionals!!!**

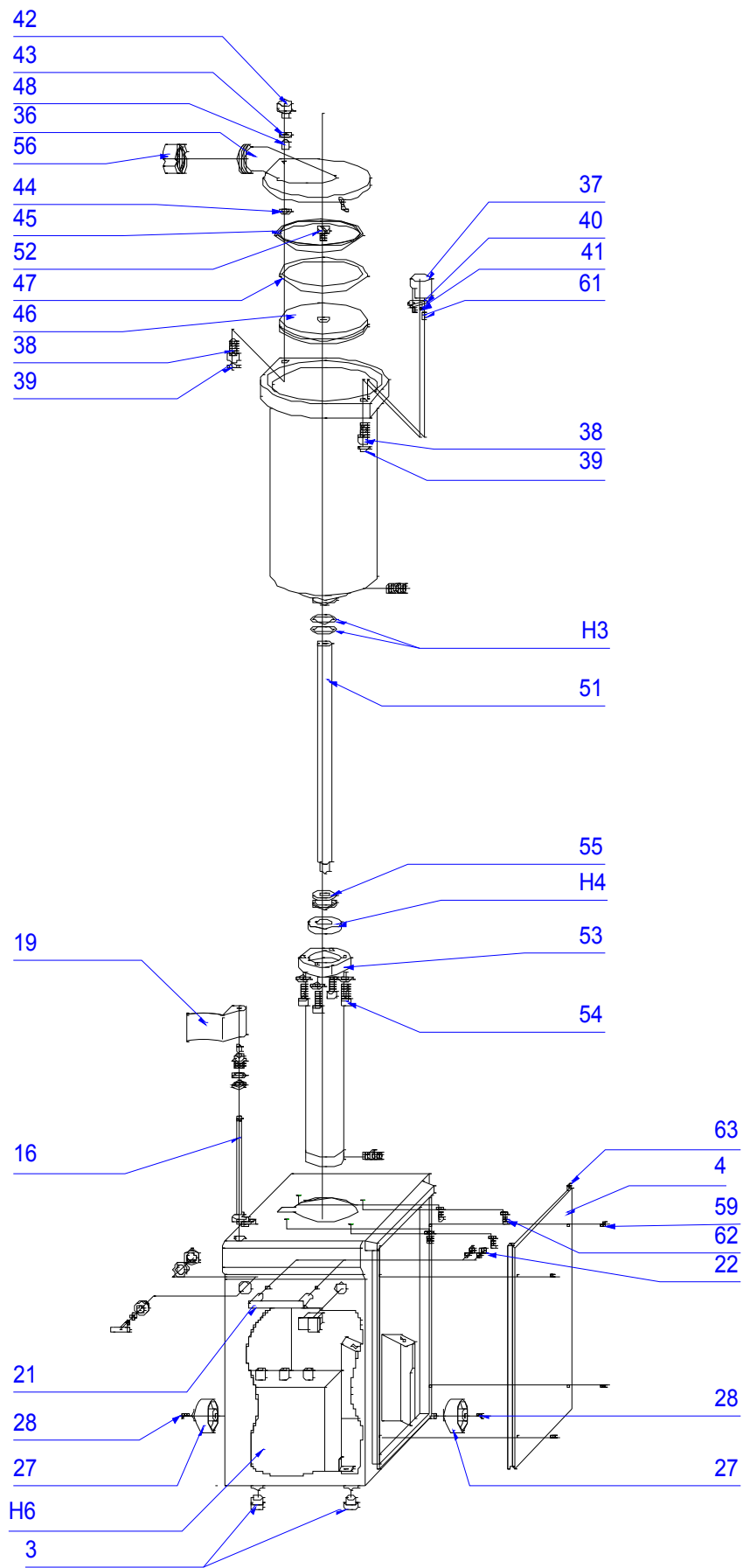
A-2324 Schwechat - Rannersdorf

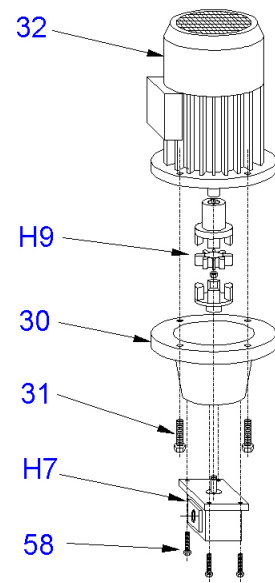
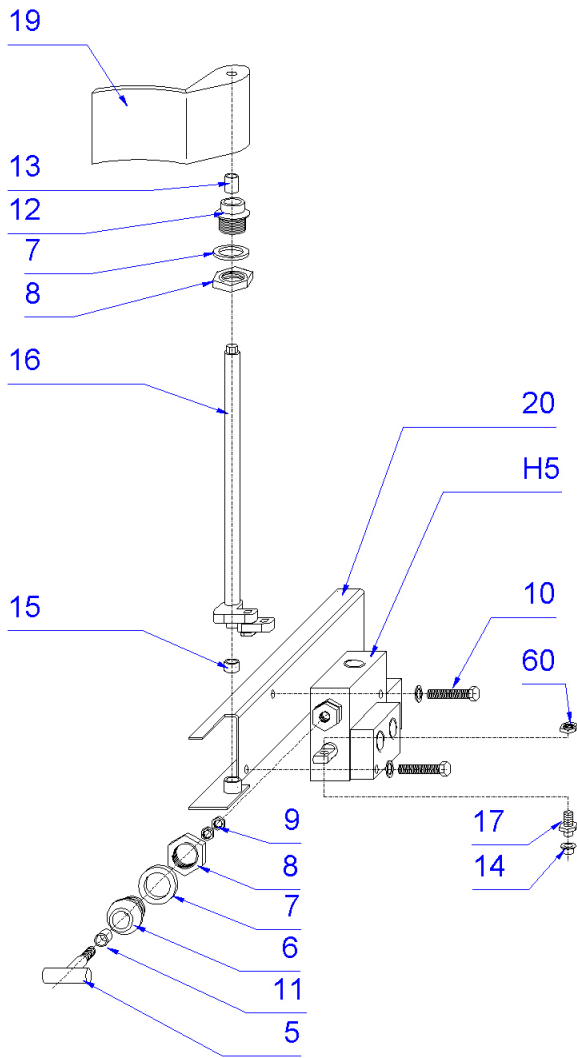
Reinhartsdorfgasse 21

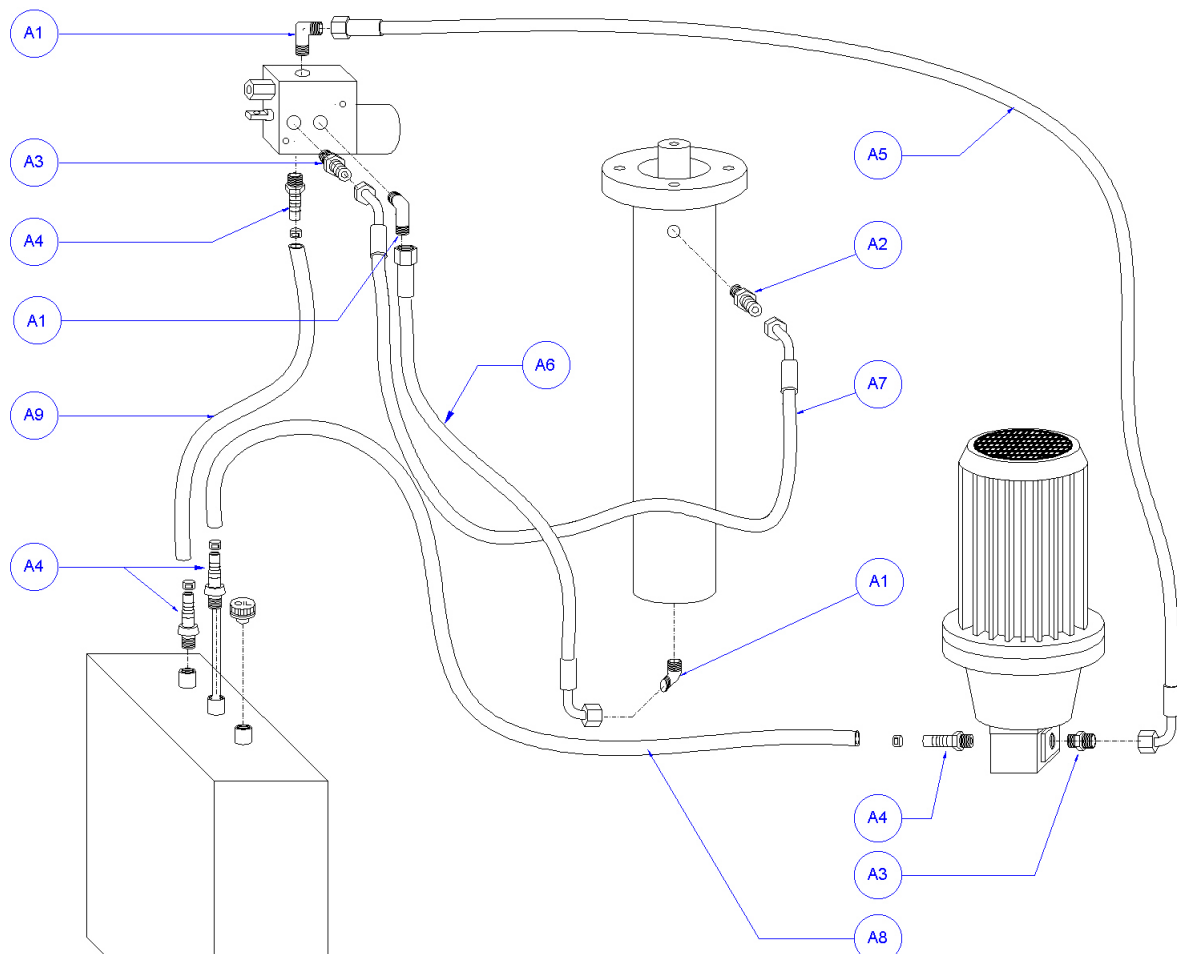
Tel. +43 (0) 1 / 706 47 47-0; Fax +43 (0) 1 / 706 47 47-47

e-mail: [office@toperczer.com](mailto:office@toperczer.com)

<http://www.toperczer.com>







A1	CM 08/12 x 17 CONU	x3
A2	UM 08/8 x 13 CONU	x1
A3	UM 08/12 x 17 CONU	x2
A4	CS 08 MC 3/8	x4
A5	R1T 1/4 0800 S ETC 08 ETC 08 90°	x1
A6	R1T 1/4 0420 S ETC 08 ETC 08 90°	x1
A7	R1T 1/4 0450 2S ETC 08 90°	x1
A8	TUYAU SOUPLE Ø8/14 Lg 500	x1
A9	TUYAU SOUPLE Lg 170 pr PH13	x1
	Lg 150 pr PHX15	x1

## NOMENCLATURE STUFFER 13 LITRES

REP	DESIGNATION	MATIERE/DIMENSION/DEBIT	QUANTITE/MACHINE
1	CASE	STAINLESS STEEL 304	1
2	FOOT	STAINLESS STEEL 304	2
3	EMBOSSSED FOOT DIAM 27		2
4	DOOR	STAINLESS STEEL 304	1
5	PRESSURE AJSTUSTING ROD	STAINLESS STEEL 304	1
6	LOWER STEEL PASS	STAINLESS STEEL 304	1
7	PASS STEEL WASHER	Z24	2
8	PASS STEEL SCREW	Hm M24	2
9	PRESSURE TIGE OF THRUSTED SCREW	SCREW STAINLESS STEEL HmM8 pas=100	2
10	DISTRIBUTOR SUPPORT SCREW	H M8-55	1
11	RING FOR LOWER STEEL PASS	10*12*10 (ref BK090 10 10)	1
12	UPPER STEEL PASS	STAINLESS STEEL 304	1
13	RING FOR UPPER STEEL PASS	ref:C4 11 14 16 15	1
14	DISTRIBUTOR SUPPORT RING	STAINLESS STEEL 304	1
15	AXIS ROTATION RING	ref C3 161 10 12 7	1
16	AXIS ALBOW	STAINLESS STEEL 304	1
17	DISTRIBUTOR CONNECTION AXIS	ref C3 161 0810 7,5	1
18	BRONZE RING FOR ROTATION OF LID	BP25 22 x 28 x 22	
19	ELBOW	STAINLESS STEEL 304	1
20	DISTRIBUTOR SUPPORT	STAINLESS STEEL F17	1
21	CARRIAGE GRASP	STAINLESS STEEL 304	1
22	SCREW OF CARRIAGE GRASP	H M8-10	1
23	ELECTRIC BOX SUPPORT	STAINLESS STEEL F17	1
24	ELECTRIC BOX SUPPORT		1
25	SCREW FIXING ELECTRIC BOX	HM5-12	1
26	AXLE	STAINLESS STEEL 304	2
27	ROLLER		2
28	SCREW FIXING ROLLER	M8-12	2
29	MOTOR SUPPORT	STAINLESS STEEL F17	2
30	LANTERN	ref : BH 161-02	1
31	MOTOR SUPPORT SCREW	HM8-40	1
32	MOTOR		1
33	CYLINDER SCREW	STAINLESS STEEL 304	1
34	SPYGLASS	STAINLESS STEEL 304	1
35	COVER GRASP	STAINLESS STEEL 304	1
36	COVER	STAINLESS STEEL 304	1
37	COVER SUPPORT	STAINLESS STEEL 304	1
38	COVER SUPPORT SCREW	M16-40	1
40	BRONZE PLATE		1
41	BRONZE PLATE FIXING SCREW	FHC M3-6	2
42	COVER ROTATION AXIS	STAINLESS STEEL 304	1
43	ROTATION AXIS UPPER WASHER	BRONZE THICKNESS 1,5	1
44	ROTATION AXIS LOWER WASHER	BRONZE THICKNESS 1,5	1
45	COVER JOINT	H ECOPUR	1
46	PUSH PISTON	STAINLESS STEEL 304	1

47	PISTON JOINT		1
48	COVER ROTATION RING	BRONZE ref C2 25 22 29	1
49			1
50	SCREW AND BRACKET HEAD	STAINLESS STEEL 304 + S235	1
51	SCREW TIGE	STAINLESS STEEL 304	1
52	SCREW FINXING PISTON/TIGE	M12	1
53	SCREW BODY	STEEL C40	1
54	SCREW FIXING SCREW BODY	CHC M12-30	4
55	PISTON	Polyethylene	1
56	SCREW	STAINLESS STEEL 304	1
57	TANK SCREW	H M6-10	2
58	SCREW FIXING PUMP	H M 6-20	4
59	DOOR SCREW	VMTF FILLED M5-10	4
60	DISTRIBUTOR AXIS SCREW	M8-12	1
61	PIN	DIAM 2,5 * 8	1
62	SCREW FIXING CYLINDER/CASE	M8	1

H1	SCAPER JOINT		1
H2	TIGE JOINT		1
H3	TOROIDAL JOINT		2
H4	PISTON JOINT		1
H5	DISTRIBUTOR		1
H6	TANK		1
H7	PUMP		1

A1	CM 13/12 x 17 CO NU		3
A2	UM 13/08 x 13 CO NU		2
A2'	CM 13/08 x 13 CO NU		1
A2'	MC 1/4 - FG 1/4		1
A3	UM 13/12 x 17 CO NU		2
A4	CS 13 MC 3/8		4
A5	R1T 3/8 0800 S ETC 13 ETC 13 90°		1
A6	R1T 3/8 0400 2S ETC 13 ETC 13 90°		1
A7	R1T 3/8 0500 2S ETC 13		1
A8	TUYAU SOUPLE Ø19,5 / 12,5	Lg 600	1
A9	TUYAU SOUPLE Ø19,5 / 12,5	Lg 160	1

# **TECHNICAL MANUAL**

## **I. SETTING UP**

- 1.1 DELIVERY AND HANDLING
- 1.2 SETTING UU ON THE SITE
- 1.3 CONNECTION TO THE MAIN CIRCUIT

## **II. STRATING UP**

CHECKING OF THE ELECTRICAL CONNECTION

## **III. USE OF THE MACHINE**

- 3.1 INTNDED USE
- 3.2. SPECIFIC POINTS
- 3.3 PRELIMINARY ADJUSTMENTS
- 3.4 START UP

## **IV. MAINTENANCE**

- 4.1 CONTROL AND CHECK WHEN POSITIONNING
- 4.2 CLEANING AND MAINTENANCE

## **V. GARANTEE**

## **VI. ANOMALIES**

## **I. INSTALLATION**

### **1.1 INSTALLATION AND MAINTENANCE**

The dispatched equipment is carefully checked before handing over to the carrier.

On receipt of the machine, check the state of the packaging.

Make the usual reserves in the events of any notable anomaly

Carefully remove the machine from the packaging.

#### **ATTENTION !**

**The stuffer is delivered in horizontal position.**

**It should be stoop up to carry all the controls.**

The stuffer is delivered with the following attachments : :

- 1 articulated lever.
- 1 piston spanner (assembly and dismantling).
- 1 screw of blocking for the nozzles.
- 1 set of 3 different nozzles ( ø 30, 20, 14).

### **1.2 SETTING UP ON THE SITE**

The machine must be placed on a solid flat surface. The bearing surface should be able to safely carry the weight ( see picture 1.2).

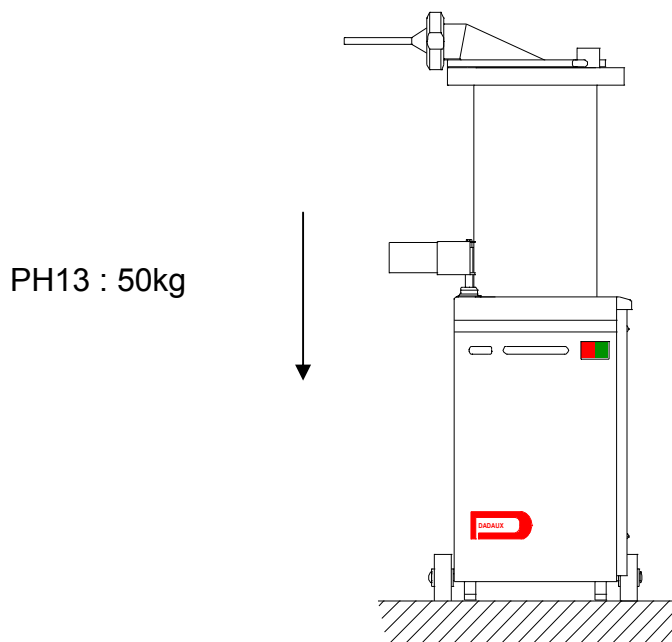


Fig. 1.2

### 1.3 CONNECTION ON THE MAINS CIRCUIT

The machine can be delivered with different connections :

- A- Connection with 1 x 20 Amp – 380V  
1 phases + earth plug
- B- Connection with 1 x 20A – 220V  
3 phases + earth plug
- C- Connection with 1 x 20A – 220V  
Single phase + neutral plug

#### **ATTENTION !**

**Check that the power line matches the voltage and frequency indicated on the machine's name plate.**

## II. STARTING UP

### CHECKING OF THE ELECTRICAL CONNECTION

Check the rotation direction of the hydraulic unit.

In order to carry out this operation, it's necessary to :

- a). Connect the line
- b). Fit the articulated lever.
- c). Push on the button « Marche ».
- d). Operate the articulate lever by pushing forward..
- e). After a few moments necessary for the hydraulic unit to prime, the piston will come up..

If the piston doesn't come up, reserve two phases in the 3 phase plug.

**ATTENTION !**

**This operation should be carried out by an experienced technician.**

Operate the articulated lever again by pushing forwards.

The piston should come up. (fig. 2.1).

Push with the leg to  
come up the piston

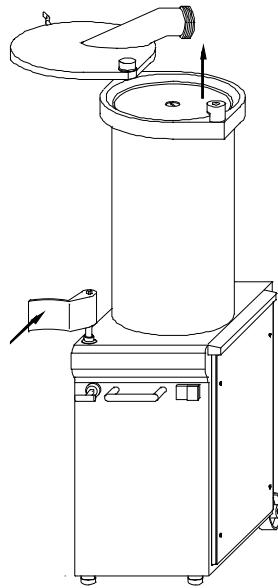


Fig. 2.1

### III. USE OF THE MACHINE

#### 3.1 INTENDED USE

The stuffer is designed to press sausage meat or any other similar food

#### 3.2 SPECIFIC POINTS (Fig. 3.2)

Before using, the operator must ensure that every element composing the stuffer are correctly positioned.

- a). Articulated lever properly fixed to the hydraulic distributor axle
- b). Piston properly screwed on to the jack rod
- c). Gasket in its housing
- d) Outlet nozzles in position by tight blocking of the nut by an energetic movement of the hand.
- e). Cover closed

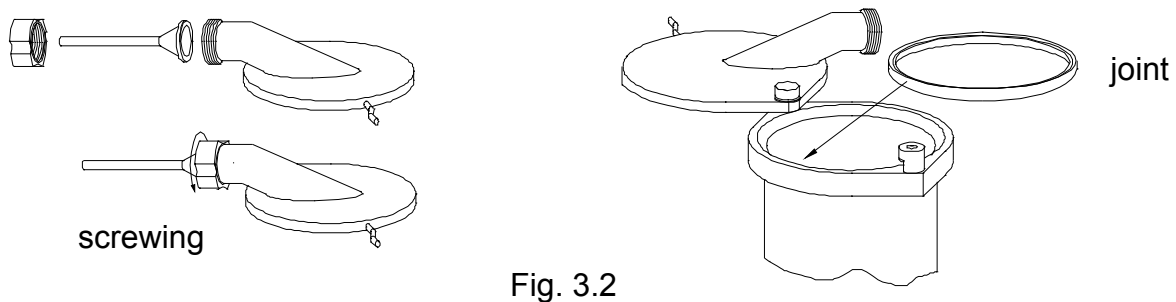


Fig. 3.2

#### 3.3 PRELIMINARY ADJUSTMENTS

The pitching of the pressure in the hydraulic unit is set at the factory for a value determined according to the stuffer's capacity.

-140bars for the PHX15

#### **ATTENTION !**

**Any alteration to the general pressure setting may cause the faulty operation or deterioration of the machine**

### 3.4 START UP

The stuffer should be equipped according to chapter 3.2. 3.2.

-Plug to the switch

-Push the button «Marche »

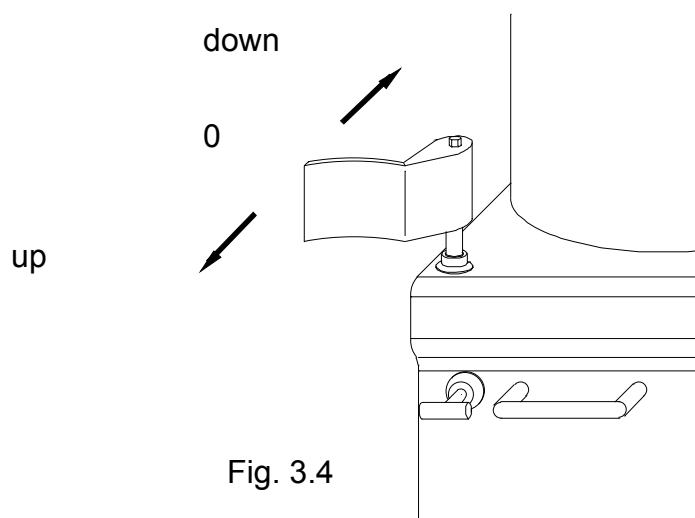
The hydraulic group unit starts.

-Push the articulated lever forward holding it continuously in position during the work.

-To stop, release the pressure on the articulated lever. It will automatically return to its original position.

Repeat the operation until the stuffer cylinder is empty.

The piston is then in its maximum position. To bring it down again, pull the articulated lever backwards ( picture 3.2). It will remain in position, on its own. When the piston is at the bottom, it is necessary to put the articulated lever back in its original position to avoid an unnecessary and harmful rise in the pressure of the hydraulic unit..



## **IV MAINTENANCE**

### **4.1 CONTROL AND CHECK WHEN POSITIONNING**

- Check the state of the bodywork and attachments.
- Check that the supply voltage matches the value given on the name plate.
- Check the rotation of the hydraulic unit's motor

### **4.2 PERIODIC CONTROL**

Once the machine has been started up, very little is required to maintain the good running and the reliability of the stuffer.

Periodic draining

The hydraulic unit should be draining after every 2000 hours work.

- Lay the machine down as shown in diagram
- Open the stuffer door
- Unplug the flexible connecting the distributor to tank
- Plug a longest pipe to this place and put the extremity in another container.
- Plug the feed
- Push on the button « MARCHÉ »
- Push the articulated lever to come up the piston in maximum.
- Then, to come down the piston in maximum..
- Stop the hydraulic group..

To dismantle :

- Unplug the hydraulic pipe between the tank and the distributor.
- Unplug the pipe between the tank and the pump, and replace the pipe by another pipe.
- Put in the container the oil.

PHX15 : 4 litres

Advice oil : TELUS 46 SHELL

- Push on the button MARCHE
- To come up and down the piston .
- Stop the hydraulic group
- Pour the oil necessary  
PHX15 : 1 litre
- o come up and down again the piston..
- Plug every pipe like initial

### 4.3 CLEANING AND MAINTENANCE

Clean carefully every day making sure that any residue is eliminated after work.

#### Dismounting of piston (Fig. 4.3.1)

- 1- Open the lid bring the piston up to maximum position..
- 2- Unscrew the central screw.
- 3- Replace the screw by the extractor and screw down as far as possible.
- 4- Pull vertically on the spanner.

The piston comes out..

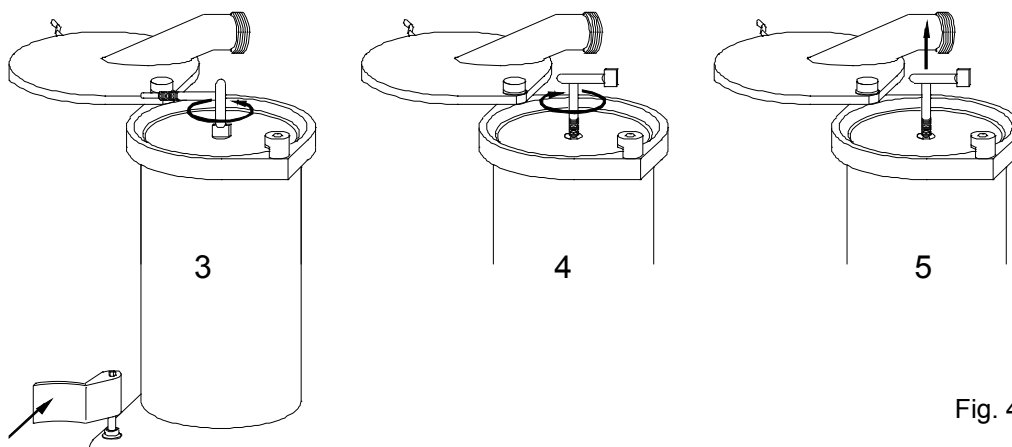


Fig. 4.3.1

### Cleaning of the piston gasket

Carefully pull out the piston gasket with your fingers or using a blunt non metal tool so as to be able to clean the gasket groove.

Put the gasket back.

### REMOUNTING THE PISTON (Fig. 4.3.2)

- 1- The extractor must be engaged in the piston and screwed down as far as possible
- 2- Place the centring nipple of the extractor into the lack rod.
- 3- Unscrew the extractor
- 4- The piston should come into position and remain perfectly horizontal.
- 5- Put the screw back and tighten with the spanner

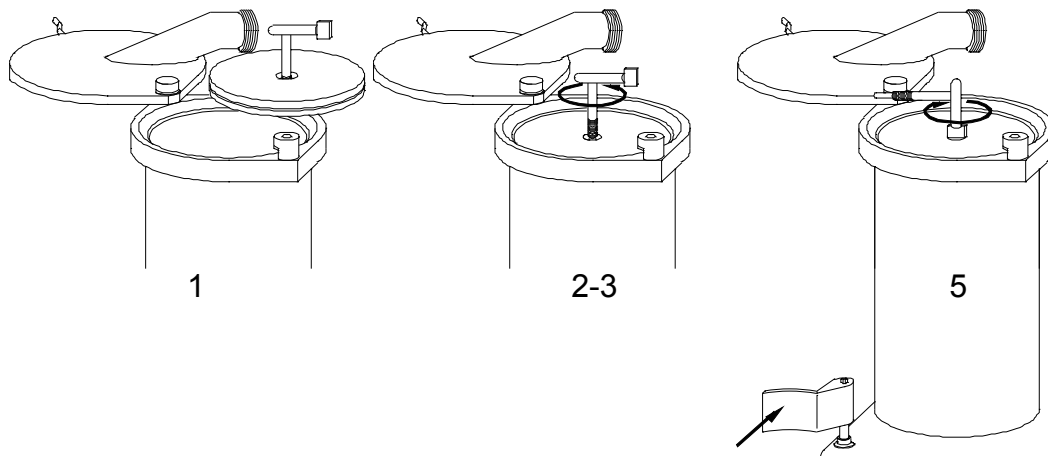


Fig. 4.3.2

### V GARANTEE

It is prohibited to alter the machine.

Contact the after sale service, if you have a problem.

The manufacturer shall not be held responsible in the following cases :

- Incorrect positionning
- Unproper use
- Use contrary to the provisions in force in the country of use.
- Bad maintenance.
- Alteration or replacement of elements
- Alteration of the original adjustments without special permission.

The guarantee is valid 1 year

## **VI ANOMALIES**

Table describing the first actions to be taken should an anomaly occur.

<b>DEFAULT</b>	<b>CAUSES</b>	<b>REMEDIES</b>
The stuffer doesn't start	-Defective motor or electrical component	-Contact the after sale service
The motor starts but the piston doesn't rise	-The motor turns in the reverse direction	Invert 2 phases in the 20 Amp plug
The pressure in the hydraulic circuit doesn't rise	-Defective hydraulic motor or pump -Fault in the setting of the pressure relief valve -lacks oil	- Contact the after sale service -Check the oil level
The piston doesn't rise	-Distributor not operated properly -Defective distributor rod -lacks oil	-Check the remounting of the articulated lever -Check the oil level
The piston continues to rise with the articulated lever released	-Distributor rod stuck	-Contact the after sale service